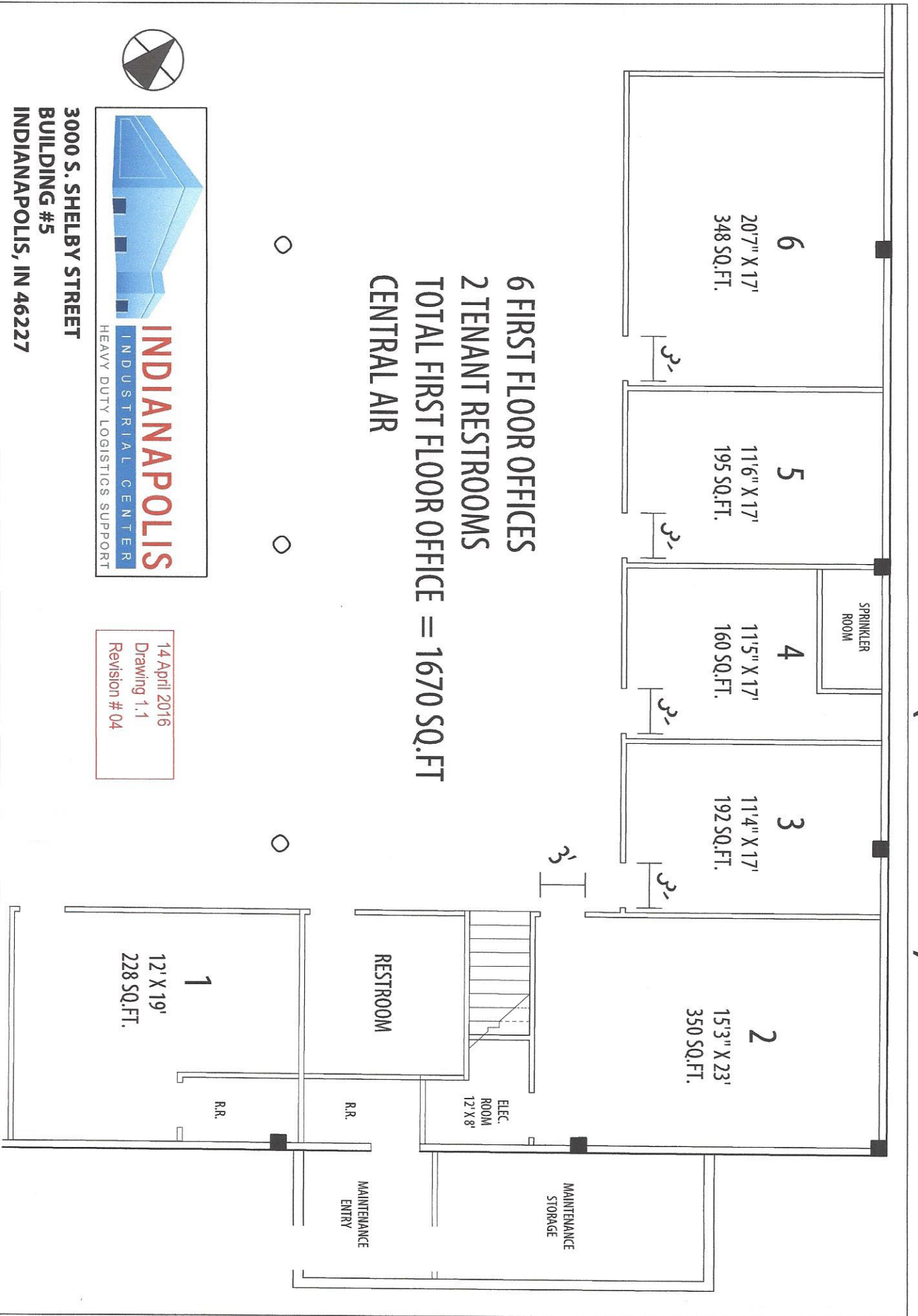


BUILDING 5 OFFICES (FIRST FLOOR)



6 FIRST FLOOR OFFICES
 2 TENANT RESTROOMS
 TOTAL FIRST FLOOR OFFICE = 1670 SQ.FT
 CENTRAL AIR

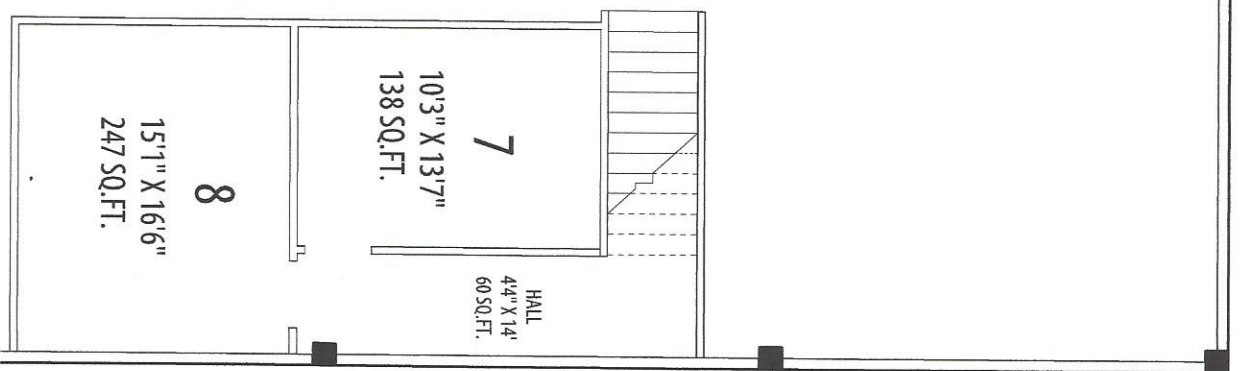


3000 S. SHELBY STREET
 BUILDING #5
 INDIANAPOLIS, IN 46227

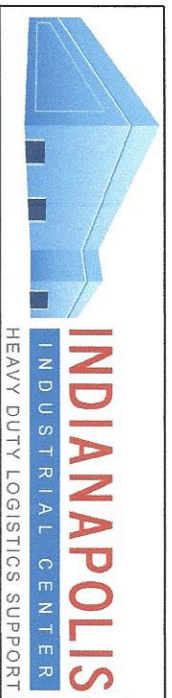
14 April 2016
 Drawing 1.1
 Revision # 04

BUILDING 3 OFFICES (SECOND FLOOR)

2 SECOND FLOOR OFFICES
TOTAL SECOND FLOOR OFFICE = 445 SQ.FT
CENTRAL AIR



14 April 2016
Drawing 1.1
Revision # 04



3000 S. SHELBY STREET
BUILDING #5
INDIANAPOLIS, IN 46227